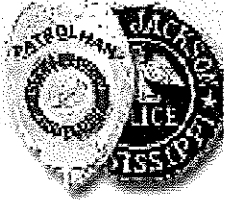


Jackson Police Department



Major Crime Overview Report

**Citywide Totals for the Week of
January 30, 2012 through February 05, 2012**

**Prepared By:
Detective Bureau**

These COMSTAT numbers are compiled from reported offenses. The actual numbers that are reported may change if crimes are reported or discovered at a later date and the crimes occurred during the above time period.

Table of Contents

Major Crimes Graph.....	1
Citywide Major Crimes Overview.....	2
Property Crimes Overview	3
Violent Crimes Overview	4
Precinct One Overview	5
Precinct Two Overview	6
Precinct Three Overview	7
Precinct Four Overview	8

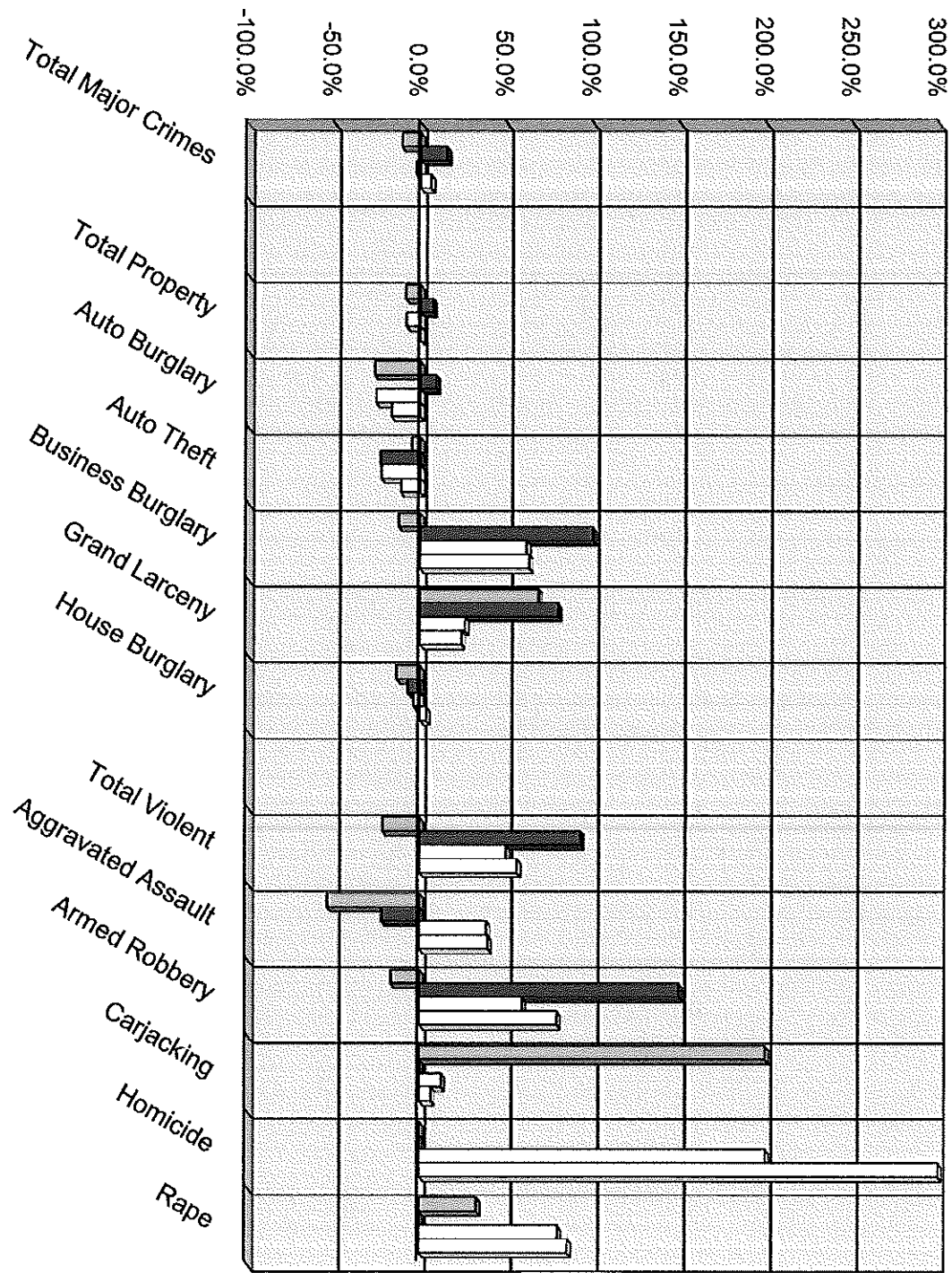
APPENDIX

Pct 1 Top Ten Crimes
Pct 2 Top Ten Crimes
Pct 3 Top Ten Crimes
Pct 4 Top Ten Crimes

These COMSTAT numbers are compiled from reported offenses. The actual numbers that are reported may change if crimes are reported or discovered at a later date and the crimes occurred during the above time period.

Major Crimes January 30, 2012 through February 05, 2012

Last Week
 Last Year
 Last 28 da
 Last YTD



Jackson Police Department
Major Crime Overview for
January 30, 2012 Through February 05, 2012

Major Crimes

Crime	This Wk.	Last Wk.	Δ%	Last Year	Δ%	Past 28 da. This Year	Past 28 da. Last Year	Δ%	This Year YTD	Last Year YTD	Δ%
Total Major Crimes	190	213	-10.8%	165	15.2%	822	844	-2.6%	1122	1061	5.7%
Total Property	161	176	-8.5%	150	7.3%	699	762	-8.3%	950	951	-0.1%
Auto Burglary	36	49	-26.5%	33	9.1%	180	242	-25.6%	240	288	-16.7%
Auto Theft	20	21	-4.8%	26	-23.1%	93	120	-22.5%	128	144	-11.1%
Business Burglary	14	16	-12.5%	7	100.0%	55	34	61.8%	80	49	63.3%
Grand Larceny	27	16	68.8%	15	80.0%	77	61	26.2%	93	75	24.0%
House Burglary	64	74	-13.5%	69	-7.2%	294	305	-3.6%	409	395	3.5%
Total Violent	29	37	-21.6%	15	93.3%	123	82	50.0%	172	110	56.4%
Aggravated Assault	7	15	-53.3%	9	-22.2%	43	31	38.7%	60	43	39.5%
Armed Robbery	15	18	-16.7%	6	150.0%	59	37	59.5%	79	44	79.5%
Carjacking	3	1	200.0%	0	N/A	9	8	12.5%	16	15	6.7%
Homicide	0	0	0.0%	0	0.0%	3	1	200.0%	4	1	300.0%
Rape	4	3	33.3%	0	N/A	9	5	80.0%	13	7	85.7%

PCT 1

Total Crimes	47	53	-11.3%	47	0.0%	230	222	3.6%	334	287	16.4%
Total Property	45	44	2.3%	39	15.4%	201	195	3.1%	289	253	14.2%
Total Violent	2	9	-77.8%	8	-75.0%	29	27	7.4%	45	34	32.4%

PCT 2

Total Crimes	56	62	-9.7%	34	64.7%	247	249	-0.8%	323	313	3.2%
Total Property	41	54	-24.1%	32	28.1%	202	222	-9.0%	266	277	-4.0%
Total Violent	15	8	87.5%	2	650.0%	45	27	66.7%	57	36	58.3%

PCT 3

Total Crimes	48	47	2.1%	41	17.1%	177	174	1.7%	237	224	5.8%
Total Property	40	36	11.1%	39	2.6%	147	160	-8.1%	197	202	-2.5%
Total Violent	8	11	-27.3%	2	300.0%	30	14	114.3%	40	22	81.8%

PCT 4

Total Crimes	39	51	-23.5%	43	-9.3%	170	200	-15.0%	228	237	-3.8%
Total Property	35	42	-16.7%	40	-12.5%	149	185	-19.5%	198	219	-9.6%
Total Violent	4	9	-55.6%	3	33.3%	21	15	40.0%	30	18	66.7%

Jackson Police Department
Major Crime Overview for
January 30, 2012 Through February 05, 2012

Property Crimes

	This Wk.	Last Wk.	Δ%	Last Yr.	Δ%	Past 28 da. This Year	Past 28 da. Last Year	Δ%	This Year YTD	Last Year YTD	Δ%
Total Property Crimes	161	176	-8.5%	150	7.3%	699	762	-8.3%	950	951	-0.1%
Auto Burglary	36	49	-26.5%	33	9.1%	180	242	-25.6%	240	288	-16.7%
Pct. 1	7	9	-22.2%	4	75.0%	32	35	-8.6%	51	46	10.9%
Pct. 2	14	19	-26.3%	9	55.6%	72	83	-13.3%	89	96	-7.3%
Pct. 3	7	1	600.0%	4	75.0%	23	42	-45.2%	31	49	-36.7%
Pct. 4	8	20	-60.0%	16	-50.0%	53	62	-35.4%	69	97	-28.9%
Auto Theft	20	21	-4.8%	26	-23.1%	93	120	-22.5%	128	144	-11.1%
Pct. 1	7	4	75.0%	11	-36.4%	23	35	-34.3%	26	41	-36.6%
Pct. 2	3	8	-62.5%	5	-40.0%	27	34	-20.6%	40	41	-2.4%
Pct. 3	4	5	-20.0%	5	-20.0%	20	25	-20.0%	32	32	0.0%
Pct. 4	6	4	50.0%	5	20.0%	23	26	-11.5%	30	30	0.0%
Business Burglary	14	16	-12.5%	7	100.0%	55	34	61.8%	80	49	63.3%
Pct. 1	4	1	300.0%	0	N/A	11	2	450.0%	17	5	240.0%
Pct. 2	2	8	-75.0%	2	0.0%	18	12	50.0%	29	21	38.1%
Pct. 3	4	5	-20.0%	4	0.0%	19	15	26.7%	25	18	38.9%
Pct. 4	4	2	100.0%	1	300.0%	7	5	40.0%	9	5	80.0%
Grand Larceny	27	16	68.8%	16	80.0%	77	61	26.2%	93	75	24.0%
Pct. 1	3	6	-50.0%	4	-25.0%	19	15	26.7%	27	16	68.8%
Pct. 2	11	2	450.0%	5	120.0%	24	20	20.0%	26	27	-3.7%
Pct. 3	9	4	125.0%	3	200.0%	17	14	21.4%	19	18	5.6%
Pct. 4	4	4	0.0%	3	33.3%	17	12	41.7%	21	14	50.0%
House Burglary	64	74	-13.5%	69	-7.2%	294	305	-3.6%	409	395	3.5%
Pct. 1	24	24	0.0%	20	20.0%	116	108	7.4%	168	145	15.9%
Pct. 2	11	17	-35.3%	11	0.0%	61	73	-16.4%	82	92	-10.9%
Pct. 3	16	21	-23.8%	23	-30.4%	68	64	6.3%	90	85	5.9%
Pct. 4	13	12	8.3%	15	-13.3%	49	60	-18.3%	69	73	-5.5%

Jackson Police Department
Major Crime Overview for
January 30, 2012 Through February 05, 2012

Violent Crimes

	This Wk.	Last Wk.	Δ%	Last Yr.	Δ%	Past 28 da. This Year	Past 28 da. Last Year	Δ%	This Year YTD	Last Year YTD	Δ%
Total Violent Crimes	29	37	-21.6%	15	93.3%	123	82	50.0%	172	110	56.4%
Aggravated Assault	7	15	-53.3%	9	-22.2%	43	31	38.7%	60	43	39.5%
Pct 1	2	3	-33.3%	6	-66.7%	9	13	-30.8%	15	15	0.0%
Pct 2	2	4	-50.0%	1	100.0%	15	7	114.3%	20	11	81.8%
Pct 3	1	4	-75.0%	1	0.0%	11	6	83.3%	14	12	16.7%
Pct 4	2	4	-50.0%	1	100.0%	8	5	60.0%	11	5	120.0%
Armed Robbery	15	18	-16.7%	6	150.0%	59	37	59.5%	79	44	79.5%
Pct 1	0	5	-100.0%	2	-100.0%	17	11	54.5%	25	14	78.6%
Pct 2	10	3	233.3%	1	900.0%	20	12	66.7%	24	15	60.0%
Pct 3	4	7	-42.9%	1	300.0%	13	5	160.0%	16	5	220.0%
Pct 4	1	3	-66.7%	2	-50.0%	9	9	0.0%	14	10	40.0%
Carjacking	3	1	200.0%	0	N/A	9	8	-12.5%	16	15	6.7%
Pct 1	0	0	0.0%	0	0.0%	1	2	-50.0%	1	4	-75.0%
Pct 2	2	0	N/A	0	N/A	6	5	20.0%	8	7	14.3%
Pct 3	1	0	N/A	0	N/A	2	1	100.0%	4	1	300.0%
Pct 4	0	1	-100.0%	0	0.0%	0	0	0.0%	3	3	0.0%
Homicide	0	0	0.0%	0	0.0%	3	1	200.0%	4	1	300.0%
Pct 1	0	0	0.0%	0	0.0%	0	0	0.0%	0	0	0.0%
Pct 2	0	0	0.0%	0	0.0%	2	1	100.0%	2	1	100.0%
Pct 3	0	0	0.0%	0	0.0%	1	0	N/A	2	0	N/A
Pct 4	0	0	0.0%	0	0.0%	0	0	0.0%	0	0	0.0%
Rape	4	3	33.3%	0	N/A	9	5	80.0%	13	7	85.7%
Pct 1	0	1	-100.0%	0	0.0%	2	1	100.0%	4	1	300.0%
Pct 2	1	1	0.0%	0	N/A	2	2	0.0%	3	2	50.0%
Pct 3	2	0	N/A	0	N/A	3	2	50.0%	4	4	0.0%
Pct 4	1	1	0.0%	0	N/A	2	0	N/A	2	0	N/A

Jackson Police Department
Precinct One Overview for
January 30, 2012 Through February 05, 2012
Major Crimes

Crime	This Wk	Last Wk	Δ%	Last Yr	Δ%	Past 28 da. This Year	Past 28 da. Last Year	Δ%	This Year YTD	Last Year YTD	Δ%
Total Major Crimes	47	53	-11.3%	47	0.0%	230	222	3.6%	334	287	16.4%
Total Property	45	44	2.3%	39	15.4%	201	195	3.1%	289	253	14.2%
Auto Burglary	7	9	-22.2%	4	75.0%	32	35	-8.6%	51	48	10.9%
Auto Theft	7	4	75.0%	11	-36.4%	23	35	-34.3%	26	41	-36.6%
Business Burglary	4	1	300.0%	0	N/A	11	2	450.0%	17	5	240.0%
Grand Larceny	3	6	-50.0%	4	-25.0%	19	15	26.7%	27	16	68.8%
House Burglary	24	24	0.0%	20	20.0%	116	108	7.4%	168	145	15.9%
Total Violent	2	9	-77.8%	8	-75.0%	29	27	7.4%	45	34	32.4%
Aggravated Assault	2	3	-33.3%	6	-66.7%	9	13	-30.8%	15	15	0.0%
Armed Robbery	0	5	-100.0%	2	-100.0%	17	11	54.5%	25	14	78.6%
Carjacking	0	0	0.0%	0	0.0%	1	2	-50.0%	1	4	-75.0%
Homicide	0	0	0.0%	0	0.0%	0	0	0.0%	0	0	0.0%
Rape	0	1	-100.0%	0	0.0%	2	1	100.0%	4	1	300.0%

Jackson Police Department
Precinct Two Overview for
January 30, 2012 Through February 05, 2012
Major Crimes

Crime	This Wk	Last Wk	Δ%	Last Yr	Δ%	Past 28 da. This Year	Past 28 da. Last Year	Δ%	This Year YTD	Last Year YTD	Δ%
Total Major Crimes	56	62	-9.7%	34	64.7%	247	249	-0.8%	323	313	3.2%
Total Property	41	54	-24.1%	32	28.1%	202	222	-9.0%	266	277	-4.0%
Auto Burglary	14	19	-26.3%	9	55.6%	72	83	-13.3%	89	96	-7.3%
Auto Theft	3	8	-62.5%	5	-40.0%	27	34	-20.6%	40	41	-2.4%
Business Burglary	2	8	-75.0%	2	0.0%	18	12	50.0%	29	21	38.1%
Grand Larceny	11	2	450.0%	5	120.0%	24	20	20.0%	26	27	-3.7%
House Burglary	11	17	-35.3%	11	0.0%	61	73	-16.4%	82	92	-10.9%
Total Violent	15	8	87.5%	2	650.0%	45	27	66.7%	67	36	58.3%
Aggravated Assault	2	4	-50.0%	1	100.0%	15	7	114.3%	20	11	81.8%
Armed Robbery	10	3	233.3%	1	900.0%	20	12	66.7%	24	15	60.0%
Carjacking	2	0	N/A	0	N/A	6	5	20.0%	8	7	14.3%
Homicide	0	0	0.0%	0	0.0%	2	1	100.0%	2	1	100.0%
Rape	1	1	0.0%	0	N/A	2	2	0.0%	3	2	50.0%

Jackson Police Department
Precinct Three Overview for
January 30, 2012 Through February 05, 2012
Major Crimes

Crime	This Wk	Last Wk	Δ%	Last Yr	Δ%	Past 28 da. This Year	Past 28 da. Last Year	Δ%	This Year YTD	Last Year YTD	Δ%
Total Major Crimes	48	47	2.1%	41	17.1%	177	174	1.7%	237	224	5.8%
Total Property	40	36	11.1%	39	2.6%	147	160	-8.1%	197	202	-2.5%
Auto Burglary	7	1	600.0%	4	75.0%	23	42	-45.2%	31	49	-36.7%
Auto Theft	4	5	-20.0%	5	-20.0%	20	25	-20.0%	32	32	0.0%
Business Burglary	4	5	-20.0%	4	0.0%	19	15	26.7%	25	18	38.9%
Grand Larceny	9	4	125.0%	3	200.0%	17	14	21.4%	19	18	5.6%
House Burglary	16	21	-23.8%	23	-30.4%	68	64	6.3%	90	85	5.9%
Total Violent	8	11	-27.3%	2	300.0%	30	14	114.3%	40	22	81.8%
Aggravated Assault	1	4	-75.0%	1	0.0%	11	6	83.3%	14	12	16.7%
Armed Robbery	4	7	-42.9%	1	300.0%	13	5	160.0%	16	5	220.0%
Carjacking	1	0	N/A	0	N/A	2	1	100.0%	4	1	300.0%
Homicide	0	0	0.0%	0	0.0%	1	0	N/A	2	0	N/A
Rape	2	0	N/A	0	N/A	3	2	50.0%	4	4	0.0%

Jackson Police Department
Precinct Four Overview for
January 30, 2012 Through February 05, 2012
Major Crimes

Crime	This Wk	Last Wk	Δ%	Last Yr	Δ%	Past 28 da. This Year	Past 28 da. Last Year	Δ%	This Year YTD	Last Year YTD	Δ%
Total Major Crimes	39	51	-23.5%	43	-9.3%	170	200	-15.0%	228	237	-3.8%
Total Property	36	42	-16.7%	40	-12.5%	149	185	-19.5%	198	219	-9.6%
Auto Burglary	8	20	-60.0%	16	-50.0%	53	82	-35.4%	69	97	-28.9%
Auto Theft	6	4	50.0%	5	20.0%	23	26	-11.5%	30	30	0.0%
Business Burglary	4	2	100.0%	1	300.0%	7	5	40.0%	9	5	80.0%
Grand Larceny	4	4	0.0%	3	33.3%	17	12	41.7%	21	14	50.0%
House Burglary	13	12	8.3%	15	-13.3%	49	60	-18.3%	69	73	-5.5%
Total Violent	4	9	-55.6%	3	33.3%	21	15	40.0%	30	18	66.7%
Aggravated Assault	2	4	-50.0%	1	100.0%	8	5	60.0%	11	5	120.0%
Armed Robbery	1	3	-66.7%	2	-50.0%	9	9	0.0%	14	10	40.0%
Carjacking	0	1	-100.0%	0	0.0%	2	1	100.0%	3	3	0.0%
Homicide	0	0	0.0%	0	0.0%	0	0	0.0%	0	0	0.0%
Rape	1	1	0.0%	0	N/A	2	0 N/A		2	0	N/A

Case#	Crime	Stat	Unit	Date	Time	Address	Amt
12-020708	AggAssault	C	1A10 1	2/1/2012	10:16 - 10:20	540 RAYMOND RD	0
12-023448	AggAssault	C	1C10 1	2/5/2012	01:09	2460 TERRY RD	0
12-019100	AutoBurg	C	1A10 9	1/30/2012	20:00 - 07:30	516 SYKES PARK RD	700
12-019830	AutoBurg	C	1C10 2	1/31/2012	08:00 - 08:05	1285 RAYMOND RD	700
12-019873	AutoBurg	C	1A10 3	1/31/2012	09:00 - 10:00	2255 GREENWAY	750
12-021937	AutoBurg	C	1C11 0	2/2/2012	19:30 - 19:45	335 ELTON RD	300
12-023499	AutoBurg	C	1C10 1	2/5/2012	00:30 - 02:40	2075 I20	90
12-023738	AutoBurg	C	1A10 6	2/5/2012	11:15 - 13:00	3102 MONTICELLO DR	100
12-023881	AutoBurg	C	1B10 1	2/5/2012	21:00 - 19:00	2717 GLENN ST	20
12-019166	AutoTheft	C	1A10 1	1/30/2012	07:15	1868 BELVEDERE DR	0
12-019696	AutoTheft	A	1C10 1	1/31/2012	01:24 - 01:42	2376 PADEN ST	0
12-019771	AutoTheft	C	1A10 6	1/31/2012	04:00 - 05:45	225 W MCDOWELL RD	0
12-019935	AutoTheft	C	1A10 9	1/31/2012	08:00 - 10:00	3933 TERRY RD	0
12-020251	AutoTheft	C	1B10 7	1/31/2012	17:00 - 18:45	3700 TIMBERCREST DR	0
12-021328	AutoTheft	C	1A10 7	2/2/2012	23:58 - 06:15	218 CHAMPION HILLS DR	0
12-023592	AutoTheft	C	1A10 3	2/5/2012	22:00 - 08:00	165 PLUMMER CIR	0
12-019109	BusBurg	C	1A10 9	1/30/2012	02:00 - 02:30	3630 RAINEY RD	600
12-019700	BusBurg	C	1C10 4	1/31/2012	01:30 - 01:37	4556 SIWELL RD	1000
12-019712	BusBurg	C	1C10 4	1/31/2012	01:30 - 01:37	4556 SIWELL RD	0
12-020503	BusBurg	C	1C10 7	2/1/2012	02:50	111 E MCDOWELL RD	9732
12-019900	GrLarceny	C	1A10 3	1/31/2012	09:00 - 10:00	2255 GREENWAY DR	780
12-020216	GrLarceny	C	1B10 9	1/31/2012	08:00 - 18:00	105 POOLE ST	760
12-021662	GrLarceny	C	1B10 1	2/2/2012	22:00 - 22:30	2732 HILLSIDE DR	4500
12-019288	HusBurg	A	1A10 6	1/30/2012	13:26	145 W SANTA CLAIR ST	0
12-019516	HusBurg	C	1B10 4	1/30/2012	07:20 - 15:15	5738 WYNDALWOOD	1495
12-019563	HusBurg	C	1B10 1	1/30/2012	19:33 - 20:11	2544 MULBERRY ST	955
12-019625	HusBurg	C	1C10	1/30/2012	09:00 - 22:30	1224 MARIA DR	0

			2				
12-019986	HusBurg	C	1A10	1/31/2012	20:00 - 12:00	172 W SANTA CLAIR ST	875
			6				
12-020150	HusBurg	C	1B10	1/31/2012	07:30 - 17:00	2843 KENTWOOD DR	810
			5				
12-020268	HusBurg	C	1B10	1/31/2012	06:45 - 07:00	3630 RAINEY RD	460
			9				
12-020279	HusBurg	A	1B10	1/31/2012	08:00 - 19:00	1900 ALTA WOODS BLVD	0
			1				
12-020343	HusBurg	C	1B10	1/31/2012	13:00 - 20:00	724 WILLANEEL DR	1600
			2				
12-020811	HusBurg	C	1B10	2/1/2012	11:00 - 14:00	3718 TIMBER CREST DR	2210
			7				
12-021054	HusBurg	C	1B10	2/1/2012	12:00 - 19:00	103 RAMADA CIR	140
			8				
12-021109	HusBurg	A	1B10	2/1/2012	10:30 - 21:30	5560 TIKI LN	0
			4				
12-021602	HusBurg	C	1B10	2/2/2012	07:00 - 14:02	4834 COTTONWOOD LN	1000
			4				
12-021657	HusBurg	C	1A10	2/2/2012	15:03	CONFIDENTIAL	550
			4				
12-021679	HusBurg	C	1B10	2/2/2012	15:46 - 15:48	3191 CHARLESTON DR	0
			6				
12-021787	HusBurg	C	1B10	2/2/2012	15:30 - 18:00	331 SHADOWLAWN DR	415
			1				
12-021851	HusBurg	C	1B10	2/2/2012	14:00 - 19:20	1146 COMBS ST	450
			2				
12-021917	HusBurg	C	1B10	2/2/2012	21:19	2606 KEY ST	2125
			6				
12-021920	HusBurg	C	1B10	2/2/2012	14:00 - 19:20	1539 DORGAN ST	80
			2				
12-022411	HusBurg	C	1A10	2/3/2012	07:30 - 15:00	1750 WOODY DR	570
			5				
12-022421	HusBurg	C	1B10	2/3/2012	21:00 - 16:01	1539 DORGAN ST	1002
			2				
12-022443	HusBurg	C	1B10	2/3/2012	07:20 - 16:15	2981 W MCDOWELL RD	899
			5				
12-023807	HusBurg	A	1B10	2/5/2012	20:00 - 16:30	943 WINN ST	0
			1				
12-024033	HusBurg	C	1C10	2/5/2012	01:27	2956 GREENWOOD	230
			7				

Case#	Crime	Stat	Unit	Date	Time	Address	Amt
12-021003	AggAssault	C	2B21 2	2/1/2012	16:00 - 18:25	2436 LADD ST	0
12-021412	AggAssault	C	2A20 9	2/2/2012	09:00 - 09:10	339 VALLEY ST	0
12-019609	ArmRob	C	2B21 0	1/30/2012	21:36	3856 NOBLE ST	220
12-019629	ArmRob	C	2C20 1	1/30/2012	22:42	200 OKLAHOMA ST	1138
12-021848	ArmRob	C	2B20 4	2/2/2012	19:00 - 19:16	359 E FORTIFICATION	154
12-021893	ArmRob	C	2B21 0	2/2/2012	20:19 - 20:22	803 ELLIS AVE	500
12-021898	ArmRob	C	2B20 4	2/2/2012	20:13 - 20:34	914 MORNINGSIDE	346
12-022852	ArmRob	C	2A20 9	2/4/2012	04:15 - 05:00	FIRST & HOUSTON	436
12-023350	ArmRob	C	2C20 8	2/4/2012	22:00	2310 LYNCH ST	3150
12-023504	ArmRob	C	2C21 3	2/5/2012	02:30 - 03:30	478 W BROWNING DR	0
12-023517	ArmRob	C	2C21 3	2/5/2012	02:30 - 03:30	478 W BROWNING	170
12-023919	ArmRob	C	2B20 9	2/5/2012	21:05 - 21:10	2113 W CAPITOL ST	0
12-019018	AutoBurg	C	2C21 0	1/30/2012	01:30 - 02:07	3430 W CAPITOL ST	650
12-019075	AutoBurg	C	2C20 7	1/30/2012	15:30 - 07:00	US80 & VALLEY ST	0
12-019172	AutoBurg	C	2A20 3	1/30/2012	06:00	188 E CAPITOL ST	0
12-019172	AutoBurg	C	2A20 3	1/30/2012	06:00	188 E CAPITOL ST	0
12-019187	AutoBurg	C	2A20 3	1/30/2012	06:00	188 E CAPITOL ST	0
12-019187	AutoBurg	C	2A20 3	1/30/2012	06:00	188 E CAPITOL ST	0
12-019541	AutoBurg	C	2B21 2	1/30/2012	01:00 - 07:45	1578 LOWERY LN	35
12-019881	AutoBurg	C	2A20 4	1/31/2012	09:45 - 09:58	1060 MONROE ST	1700
12-021177	AutoBurg	C	2C20 1	2/1/2012	21:30 - 22:43	995 S WEST ST	600
12-021279	AutoBurg	C	2C20 8	2/2/2012	02:00 - 02:49	1520 ELLIS AVE	1250
12-021300	AutoBurg	C	2C20 8	2/2/2012	02:00 - 04:00	1520 ELLIS AVE	230
12-022732	AutoBurg	C	2C21 0	2/4/2012	23:15 - 01:52	MCCAIN & LINDSEY	0
12-022886	AutoBurg	C	2A20 9	2/4/2012	06:30 - 07:10	423 MARCUS L BUTLER DR	200
12-022998	AutoBurg	C	2A20 4	2/4/2012	00:01 - 08:00	707 N CONGRESS ST	600
12-019648	AutoTheft	C	2B20	1/30/2012	17:30 - 23:29	190 E CAPITAL	0

			3					
12-019648	AutoTheft	C	2B20	1/30/2012	17:30 - 23:29	190 E CAPITAL	0	
			3					
12-020565	AutoTheft	C	2A20	2/1/2012	07:30 - 07:40	1520 ELLIS AVE	0	
			8					
12-021494	BusBurg	A	2A20	2/2/2012	05:00 - 05:25	3115 W CAPITOL ST	0	
			9					
12-022152	BusBurg	C	2A20	2/3/2012	02:19 - 08:00	3115 W CAPITOL ST	50	
			9					
12-021329	Carjack	C	2A20	2/2/2012	05:30 - 06:00	CONGRESS & FORTIFICATION	5175	
			4					
12-022754	Carjack	C	2C21	2/4/2012	02:24 - 02:26	4511 BYRD DR	80	
			0					
12-019964	GrLarceny	C	2A21	1/31/2012	22:00 - 11:50	213 S ALABAMA AVE	650	
			0					
12-019967	GrLarceny	C	2A21	1/31/2012	11:50 - 11:55	4406 ROBINSON ST	760	
			2					
12-019970	GrLarceny	C	2A20	1/31/2012	11:30 - 11:59	401 N WEST ST	600	
			3					
12-019970	GrLarceny	C	2A20	1/31/2012	11:30 - 11:59	401 N WEST ST	600	
			3					
12-020123	GrLarceny	C	2A20	1/31/2012	22:30 - 10:00	1400 VALLEY ST	500	
			7					
12-020130	GrLarceny	C	2B20	1/31/2012	13:00 - 16:06	200 E AMITE ST	600	
			3					
12-020130	GrLarceny	C	2B20	1/31/2012	13:00 - 16:06	200 E AMITE ST	600	
			3					
12-020259	GrLarceny	C	2B21	1/31/2012	18:00 - 18:30	3425 ROBINSON ST	600	
			1					
12-021770	GrLarceny	C	2B21	2/2/2012	00:00 - 23:00	2900 ST CHARLES ST	6000	
			0					
12-021829	GrLarceny	C	2B21	2/2/2012	16:00 - 17:00	125 SANFORD ST	2100	
			0					
12-022409	GrLarceny	C	2B20	2/3/2012	15:48	743 N PRESIDENT ST	700	
			4					
12-019248	HusBurg	C	2A21	1/30/2012	08:00 - 10:00	191 S ALABAMA ST	800	
			0					
12-019266	HusBurg	C	2A21	1/30/2012	12:00 - 12:40	3150 ROBINSON ST	250	
			0					
12-019436	HusBurg	C	2B21	1/30/2012	05:00 - 17:20	1215 DEWEY ST	1200	
			1					
12-020219	HusBurg	C	2B20	1/31/2012	08:00 - 17:45	1603 FLORENCE AVE	150	
			7					
12-020309	HusBurg	C	2B21	1/31/2012	07:30 - 18:45	961 GLENWOOD ST	2025	
			1					
12-021072	HusBurg	C	2B21	2/1/2012	19:00 - 20:36	1253 WOOD VILLAGE DR	1000	
			1					
12-021218	HusBurg	C	2C21	2/2/2012	21:00 - 00:49	709 VERDEMONT DR	1000	
			0					
12-021634	HusBurg	C	2B21	2/2/2012	11:00 - 14:30	5132 DEWEEES ST	689	
			3					
12-021922	HusBurg	C	2B21	2/2/2012	19:15 - 21:15	133 N ALABAMA AVE	700	
			0					
12-023136	HusBurg	C	2B21	2/4/2012	17:00 - 16:39	727 NIMITZ ST	0	

			0				
12-023349	HusBurg	C	2B20	2/4/2012	11:00 - 22:29	518 VALLEY ST	400
			9				
12-022826	Rape	C	2C21	2/4/2012	04:56 - 05:20	3210 W CAPITOL ST	0
			0				

Case#	Crime	Stat	Unit	Date	Time	Address	Amt
12-022789	AggAssault	C	3C30 1	2/4/2012	03:38	2711 LILLY ST	0
12-020545	ArmRob	C	3A30 4	2/1/2012	01:30	SEARS & JOHNSON	200
12-020935	ArmRob	C	3B30 1	2/1/2012	17:00 - 17:24	1225 BAILEY AVE	40
12-021048	ArmRob	C	3B30 5	2/1/2012	19:30 - 19:58	2419 EMMETT AVE	350
12-022580	ArmRob	C	3B30 1	2/3/2012	20:23	1202 MARTIN LUTHER KING	335
12-019136	AutoBurg	C	3A30 1	1/30/2012	22:00 - 08:00	1225 BAILEY AVE	100
12-019139	AutoBurg	C	3A30 1	1/30/2012	11:30 - 04:00	1225 BAILEY AVE	100
12-019220	AutoBurg	C	3A30 2	1/30/2012	11:10 - 11:15	2327 LIVINGSTON RD	75
12-019340	AutoBurg	C	3B30 1	1/30/2012	22:00 - 06:00	1636 PLEASANT AVE	600
12-020594	AutoBurg	C	3A30 6	2/1/2012	18:30 - 08:15	4126 BULLARD ST	670
12-020843	AutoBurg	C	3A30 1	2/1/2012	14:30 - 14:50	LUDLOW & ANN BANKS	0
12-021005	AutoBurg	C	3B31 0	2/1/2012	16:00 - 18:00	4619 HANGING MOSS RD	170
12-019071	AutoTheft	C	3A30 9	1/30/2012	06:30 - 06:40	551 WOODWARD AVE	0
12-019108	AutoTheft	C	3A30 9	1/30/2012	20:00 - 07:53	146 PASA ROBLES ST	0
12-019764	AutoTheft	C	3C30 1	1/31/2012	23:58 - 05:41	165 MAPLE ST	0
12-021783	AutoTheft	C	3B31 1	2/2/2012	18:00 - 17:00	2015 HILDA DR	0
12-019061	BusBurg	C	3C30 6	1/30/2012	17:00 - 05:00	1450 COUNTRY CLUB DR	0
12-019129	BusBurg	C	3A30 6	1/30/2012	12:00 - 06:00	1851 COUNTRY CLUB DR	1010
12-020579	BusBurg	C	3A30 5	2/1/2012	22:30 - 08:00	4410 MEDGAR EVERS	200
12-022160	BusBurg	C	3A30 2	2/3/2012	06:30 - 08:22	3307 MARTIN LUTHER KING	650
12-019140	Carjack	C	3A30 8	1/30/2012	13:30 - 08:56	COTTONWOOD & MEDGAR EVERS	8525
12-019150	GrLarceny	C	3A30 1	1/30/2012	09:16	539 MAPLE ST	700
12-019200	GrLarceny	C	3A31 1	1/30/2012	17:30 - 06:00	1729 W COUNTY LINE RD	800
12-019958	GrLarceny	C	3A30 7	1/31/2012	11:48	614 W HILLSDALE DR	3200
12-020079	GrLarceny	C	3B30 5	1/31/2012	12:30 - 13:30	3515 HOLLYWOOD AVE	628
12-020479	GrLarceny	C	3C30 2	2/1/2012	14:00 - 19:00	1128 WOODROW WILSON AVE	800
12-021366	GrLarceny	C	3A30	2/2/2012	18:30 - 07:00	1111 W NORTHSIDE DR	1300

			4					
12-022073	GrLarceny	C	3C31 1	2/3/2012	03:20 - 04:20	3120 FOREST AVE	800	
12-022688	GrLarceny	C	3C30 5	2/4/2012	00:31	2215 NEWPORT ST	1000	
12-023111	GrLarceny	C	3B30 1	2/4/2012	14:00 - 14:25	PALMYRA & CLOVERLEAF CIR	3000	
12-018996	HusBurg	A	3C30 9	1/30/2012	00:45 - 01:10	1651 FOREST AVE	0	
12-019369	HusBurg	C	3B30 8	1/30/2012	15:42	124 RUTHERFORD B HAYES CIR	2400	
12-019910	HusBurg	C	3A30 5	1/31/2012	10:00 - 10:15	3706 MAIN ST	651	
12-020028	HusBurg	A	3A30 9	1/31/2012	12:00 - 13:41	222 IRIS AVE	0	
12-020336	HusBurg	C	3B31 0	1/31/2012	07:00 - 20:14	795 W COUNTY LINE	900	
12-021033	HusBurg	C	3B30 7	2/1/2012	19:00 - 19:12	308 N FLAG CHAPEL RD	0	
12-021334	HusBurg	C	3A30 5	2/2/2012	22:00	2618 UTAH ST	430	
12-022004	HusBurg	C	3C30 9	2/3/2012	06:25 - 01:06	121 WACKER DR	1050	
12-022266	HusBurg	C	3A31 1	2/3/2012	10:30 - 11:45	2282 FOREST GLEN DR	717	
12-022374	HusBurg	C	3B31 1	2/3/2012	07:30 - 15:00	1547 FAIRWOOD DR	300	
12-022385	HusBurg	C	3A31 0	2/3/2012	03:00 - 14:45	791 W COUNTY LINE RD	2000	
12-022593	HusBurg	C	3B30 9	2/3/2012	16:30 - 20:49	4020 OAKLAWN DR	0	
12-022629	HusBurg	C	3B30 8	2/3/2012	15:00 - 15:19	7565 MEDGAR EVERS	1434	
12-022893	HusBurg	A	3A30 2	2/4/2012	09:00 - 09:26	2905 OVERSTREET	0	
12-022962	HusBurg	C	3A30 6	2/4/2012	11:00 - 11:08	4246 BREAZEALE DR	850	
12-022980	HusBurg	C	3A30 5	2/4/2012	03:00 - 09:00	2708 SKYLINE DR	210	
12-019524	Rape	C	3B30 5	1/30/2012	15:20 - 19:26	4126 PARKWAY AVE	0	
12-022135	Rape	C	3A30 2	2/3/2012	07:00 - 07:32	3302 HOLMES AVE	0	

Case#	Crime	Stat	Unit	Date	Time	Address	Amt
12-020073	AggAssault	C	4A40 8	1/31/2012	14:08 - 14:26	MANHATTAN & CEDARS OF LEBANON	0
12-021784	AggAssault	C	4B40 8	2/2/2012	17:50 - 17:54	150 WOODWAY DR	0
12-021026	ArmRob	C	4B40 1	2/1/2012	18:00 - 18:55	555 E WOODROW WILSON AVE	240
12-021185	AutoBurg	C	4C40 7	2/1/2012	21:45 - 23:32	611 RIDGEWOOD RD	100
12-021459	AutoBurg	C	4A40 7	2/2/2012	09:00 - 10:29	46 NORTH TOWN DR	430
12-021515	AutoBurg	C	4A40 7	2/2/2012	08:20 - 09:40	6020 I55 N	1000
12-021930	AutoBurg	C	4B40 5	2/2/2012	21:45	180 SHEPPARD RD	300
12-022386	AutoBurg	C	4B40 1	2/3/2012	21:00 - 07:30	318 ALEXANDER ST	705
12-022997	AutoBurg	C	4A40 1	2/4/2012	23:00 - 11:55	229 E BELL ST	195
12-023284	AutoBurg	C	4B40 3	2/4/2012	19:30 - 21:01	605 DULING AVE	700
12-023948	AutoBurg	C	4B40 1	2/5/2012	21:00 - 21:59	1154 N MILL ST	0
12-019845	AutoTheft	C	4A40 1	1/31/2012	13:00	MILL & TAFT	0
12-019980	AutoTheft	C	4A40 5	1/31/2012	13:30 - 09:00	4901 MCWILLIE CIR	0
12-020750	AutoTheft	C	4A40 8	2/1/2012	17:30 - 12:00	5395 I55 N	0
12-021173	AutoTheft	C	4C40 7	2/1/2012	21:45 - 23:32	6111 RIDGEWOOD RD	0
12-021566	AutoTheft	C	4A40 3	2/2/2012	10:40	622 DULING ST	0
12-022545	AutoTheft	C	4B40 1	2/3/2012	18:45 - 19:20	352 BAKER ST	0
12-019079	BusBurg	C	4A40 1	1/30/2012	15:30 - 07:00	ASH & CLOISTER	1000 0
12-021522	BusBurg	C	4A40 8	2/2/2012	03:00 - 04:00	5735 I55 N	100
12-022052	BusBurg	C	4C40 8	2/3/2012	03:20	5735 I55 N	1150
12-022868	BusBurg	C	4A40 4	2/4/2012	12:00 - 07:00	1445 LELIA DR	810
12-019252	GrLarceny	C	4A40 5	1/30/2012	09:30 - 12:00	520 LAUNCELOT RD	700
12-019297	GrLarceny	C	4A40 8	1/30/2012	13:00 - 13:15	5255 MANHATTAN RD	1200
12-021456	GrLarceny	C	4A40 5	2/2/2012	10:53	4181 NORTHVIEW DR	2500
12-021565	GrLarceny	C	4A40 4	2/2/2012	17:00 - 18:30	2307 TWIN LAKES CIR	1230
12-019382	HusBurg	C	4B40 5	1/30/2012	11:05 - 15:00	739 LAWRENCE RD	4000
12-019391	HusBurg	C	4B40	1/30/2012	07:45 - 16:15	322 DUNBAR ST	1960

			3				
12-019413	HusBurg	C	4B40	1/30/2012	12:00 - 16:30	4612 KELTON DR	600
			6				
12-019699	HusBurg	C	4C40	1/31/2012	01:39	1523 E COUNTY LINE RD	310
			7				
12-020155	HusBurg	C	4B40	1/31/2012	08:00 - 16:30	4634 MANILA DR	1600
			5				
12-020332	HusBurg	C	4B40	1/31/2012	20:00 - 20:06	215 HARTFIELD ST	500
			3				
12-020866	HusBurg	C	4B40	2/1/2012	07:00 - 15:00	3050 DOWNING ST	0
			3				
12-021859	HusBurg	C	4B40	2/2/2012	19:15 - 19:22	320 CULLEY DR	399
			8				
12-021874	HusBurg	C	4B40	2/2/2012	08:30 - 19:55	150 WOODWAY DR	700
			8				
12-022324	HusBurg	C	4A40	2/3/2012	13:30	214 GADDIS ST	0
			3				
12-022450	HusBurg	C	4B40	2/3/2012	08:00 - 16:00	232 MANSHIP ST	0
			1				
12-022608	HusBurg	C	4B40	2/3/2012	17:00 - 21:05	30 NORTH HILL PKY	850
			5				
12-023455	HusBurg	C	4C40	2/5/2012	01:16	4428 CHILDRESS DR	0
			5				
12-021496	Rape	C	4A40	2/2/2012	10:11 - 10:17	5880 RIDGEWOOD RD	0
			7				